

# TUTORIAL



**FRACTRACKER**  
ALLIANCE

insights empowering action

A USER'S GUIDE TO FRACTRACKER.ORG

Last Updated May 2017 | [www.fractracker.org](http://www.fractracker.org) | [info@fractracker.org](mailto:info@fractracker.org) | (717) 303-0403

## WHAT IS FRACTRACKER?

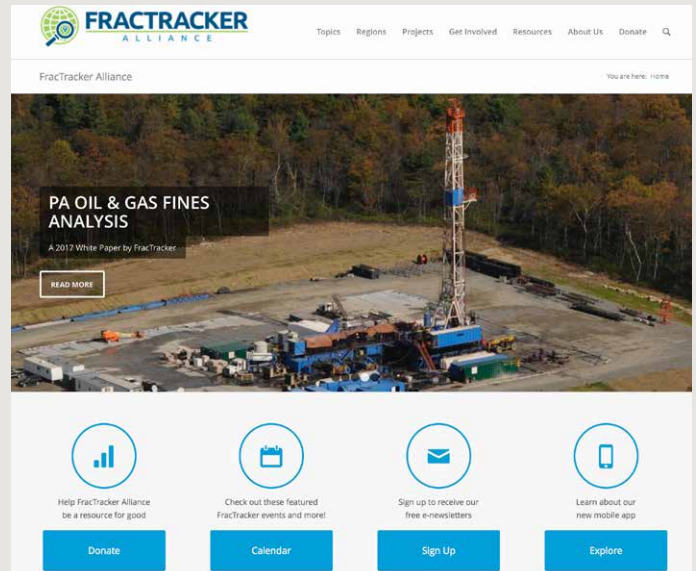
**"INSIGHTS EMPOWERING ACTION" - WE HELP PEOPLE FIND, DOCUMENT, & UNDERSTAND OIL & GAS ACTIVITY NEAR THEM**

FracTracker Alliance studies, maps, and communicates the risks of oil and gas development to protect our planet and support the renewable energy transformation.

With our online maps you can:

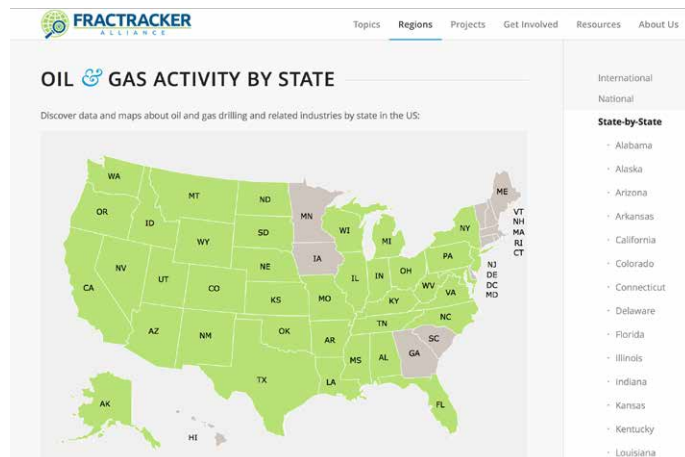
- Locate wells, compressor stations, and other oil and gas (O&G) facilities near you
- Determine your distance from an O&G site
- See patterns of O&G development and violations
- Follow the development of O&G projects, like pipelines

Visit [FracTracker.org](http://FracTracker.org) to learn more (site shown right).



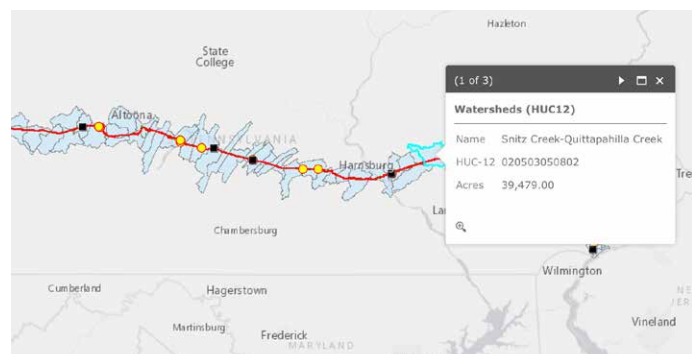
## NAVIGATING THE SITE & FINDING A MAP

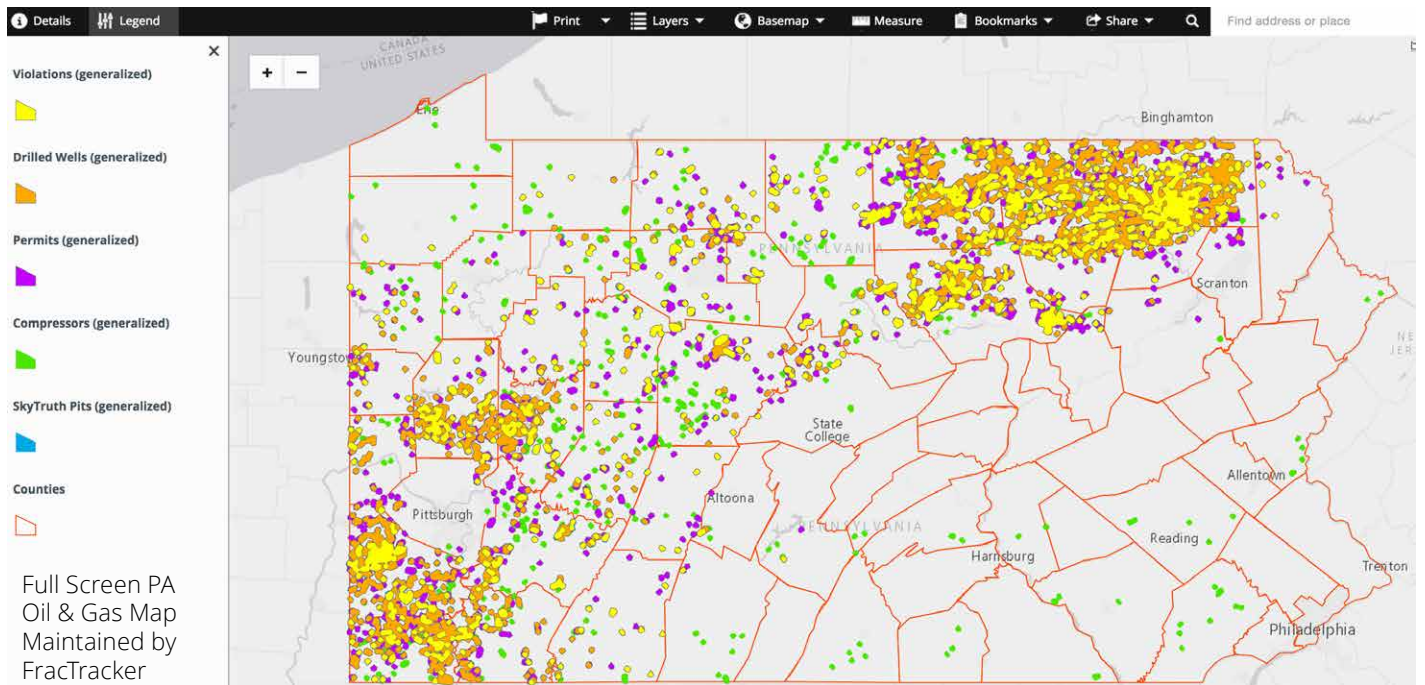
USE THE FOLLOWING GUIDE TO LEARN MORE ABOUT NAVIGATING FRACTRACKER.ORG & OUR MAPS



1. Open your Internet browser on your computer or smart phone. We recommend using Safari, Chrome, or Firefox, not Internet Explorer.
2. Navigate to [www.FracTracker.org](http://www.FracTracker.org) by entering the URL in the address bar or searching for FracTracker using a search engine like Google.
3. Once on FracTracker.org, hover your mouse over the top toolbar button called "Topics" to select from a variety of articles about oil and gas drilling issues - such as pipelines.
4. Hover over "Regions" to explore information by an area instead.

5. To find your state (in the U.S.) select "State-by-State" from the drop down menu, and then click on your state in the map or sidebar on the next page (shown left).
6. Upon selecting your state of interest, you will be taken to a state-specific landing page where we share detailed oil and gas maps, statistics, related articles, and photos - where available.
7. Clicking on the oil and gas map at the top of each landing page will take you to a dynamic map showing where wells have been drilled or proposed in the state.
8. Additional data such as violations and watersheds may also be included.
9. Further down the landing page you may see different types of maps, from environmental justice concerns to pipelines and proposals like the Mariner East 2 map below:





## WORKING WITH A FRACTRACKER MAP

FULL SCREEN VERSIONS OF FRACTRACKER MAPS LOOK LIKE THE PENNSYLVANIA SHALE VIEWER ABOVE. BELOW WE DISCUSS VARIOUS TOOLS AVAILABLE ON OUR DYNAMIC MAPS AND HOW TO USE THEM.

Zoom by scrolling your mouse roller or double clicking on the map. Select areas or points to bring up pop up boxes to learn more about the data being shown.

Top Toolbar (Left to Right):

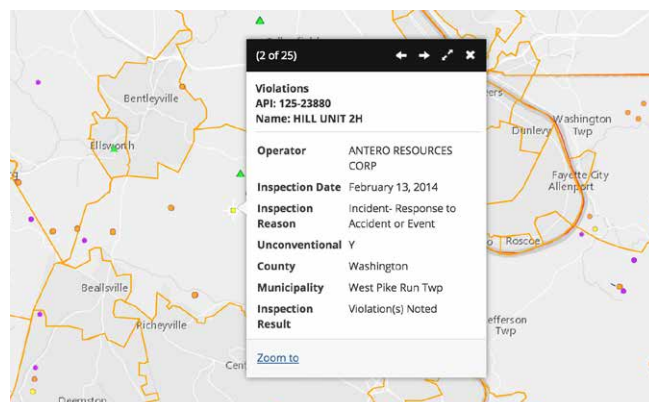
- **Details** – Use this section to learn about the map and its data.
- **Legend** – Discover what the various symbols on the map mean. (On the PA map above, you can see violations, drilled wells, permits, compressor stations, pits, and counties).
- **Print** – Export the map as seen on the screen in a variety of file types, such as JPG and PDF files, and different resolutions.

- **Layers** – Toggle layers off to hide them from view.
- **Basemap** – Change the background image behind the data, such as Street View, National Geographic, or Topographic.
- **Measure** – Quantify an area or distance, or determine the latitude and longitude of a specific point. In the pop up box, choose which measurement option you would like, then click on the beginning point on the map. When you would like your measurement result, double click your mouse.
- **Bookmarks** – Save a spot on the map to refer to later.
- **Share** – Post a map on social media, or share via email.
- **Search box** – Find an area on the map, such as an address.

## POP UP BOXES

SCROLLING THROUGH MULTIPLE RECORDS IN POP UP BOXES

When you select a point on the map, a pop up box will display. Click on the left and right arrows in the black toolbar to explore multiple records at one location.



## ADDITIONAL RESOURCES

CHECK OUT OUR ONLINE TUTORIAL & FAQs OR CONTACT US!

If after reading these instructions you still have trouble finding what you need on FracTracker.org, or you need a more in-depth map training, just let us know. We would be happy to help!

The following online, interactive map tutorial is a great resource for working with our maps: [fractracker.org/how-fractracker-works](http://fractracker.org/how-fractracker-works)

We also have a free mobile app for tracking fracking for both iPhone and Android phones. Learn more: [fractracker.org/apps](http://fractracker.org/apps)

If you have additional questions or would like to request a training, please email: [info@fractracker.org](mailto:info@fractracker.org), or call: (717) 303-0403.

